

KHSAA Basketball - Game Box Score

Rowan County Lady Vikings vs. Boone County Lady Rebels

Date: 03/12/09 Time: 1:30 PM Site: Diddle Arena-Bowling Green, KY Attendance: 4523

Visitors: Boone County Lady Rebels

##	Name	P	FG	3 Pt	FT	PTS	ORB	DRB	TR	PF	AST	TO	BS	ST	MIN
10	Ashley Smith		0/0	0/0	0/0	0	0	0	0	0	0	0	0	0	DNP
11	Kayla Robertson		0/0	0/0	0/0	0	0	0	0	0	0	0	0	0	DNP
12	* Jacy Bradley		1/5	0/1	1/3	3	0	3	3	3	3	5	0	1	26:24
14	Jackie Marschall		1/1	0/0	0/0	2	0	1	1	0	0	0	0	0	4:21
15	Olivia Fields		0/0	0/0	0/0	0	0	0	0	0	0	0	0	0	DNP
20	* Joscelyn Davis		4/12	0/0	2/2	10	6	6	12	2	1	0	2	0	27:39
23	Meagan Spicer		0/0	0/0	0/0	0	0	0	0	0	0	0	0	0	DNP
24	* Courtney Sellers		1/4	0/1	0/0	2	2	5	7	2	2	2	0	0	25:02
25	Stacie Shrout		0/0	0/1	0/0	0	0	1	1	2	0	3	0	0	8:24
30	Annie Browning		0/1	1/2	0/0	3	0	0	0	1	0	0	1	1	10:42
32	* Lauren Bowling		5/7	1/2	4/9	17	3	7	10	2	0	2	0	2	30:02
34	* Heather Sandlin		1/5	0/1	0/0	2	0	0	0	3	3	6	0	2	27:26
42	Lydia Nash		0/0	0/0	0/0	0	0	0	0	0	0	0	0	0	DNP
13	Ashleigh Conner		0/0	0/0	0/0	0	0	0	0	0	0	0	0	0	DNP
	Team						6	2	8			1			
	Totals		13/35	2/8	7/14	39	17	25	42	15	9	19	3	6	160
	2 PT FG		1st Half	7/17	41.2%	2nd Half	6/18	33.3%	Game	13/35	37.1%				
	3 PT FG		1st Half	2/5	40.0%	2nd Half	0/3	0.00%	Game	2/8	25.0%				
	Free Throws		1st Half	2/6	33.3%	2nd Half	5/8	62.5%	Game	7/14	50.0%				

Home: Rowan County Lady Vikings

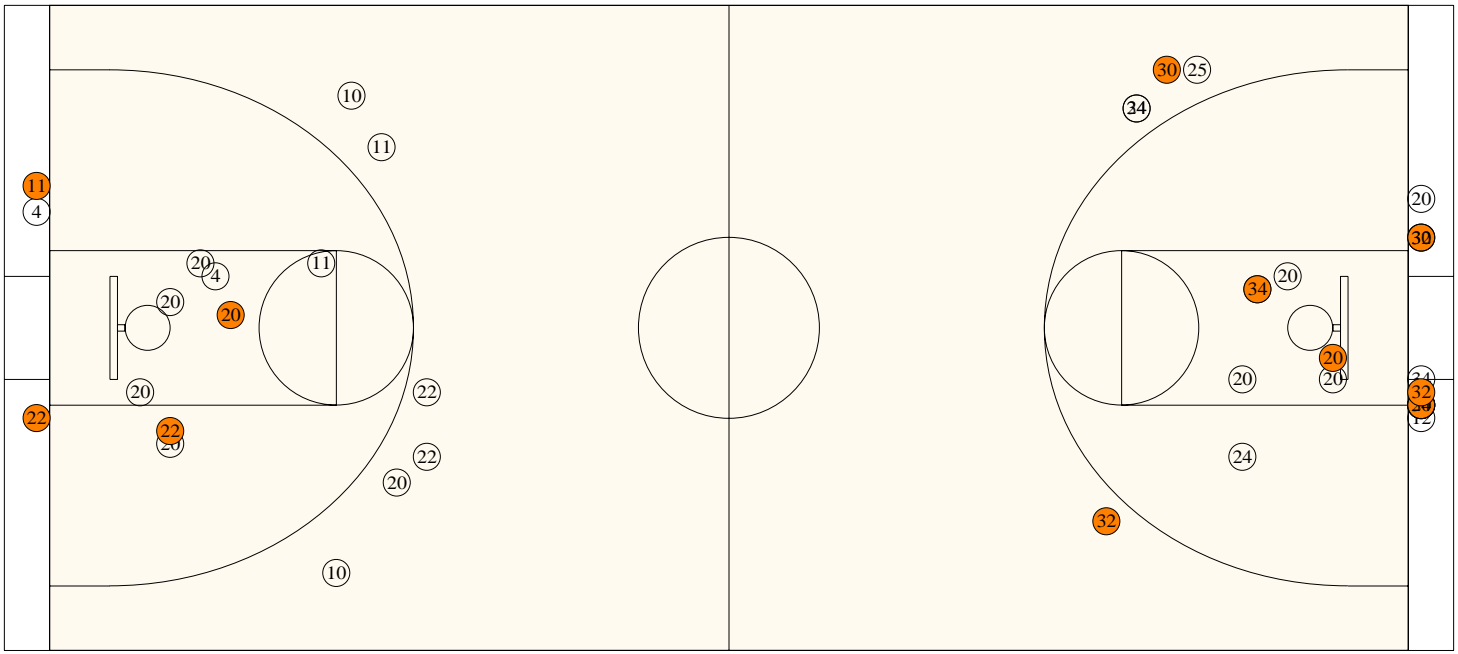
##	Name	P	FG	3 Pt	FT	PTS	ORB	DRB	TR	PF	AST	TO	BS	ST	MIN
3	Tierra Hamilton		0/0	0/0	0/0	0	0	0	0	0	0	1	0	0	4:10
4	* Kaitlyn Muncy		0/6	0/0	1/2	1	1	1	2	1	0	1	0	0	16:59
10	Jenna Kiser		0/0	0/2	0/0	0	1	3	4	2	0	1	0	0	10:39
11	* Jennifer Brockman		1/2	0/4	2/4	4	1	3	4	5	1	3	0	1	31:02
12	Stevee Townsend		0/0	0/0	0/0	0	0	0	0	0	0	0	0	0	DNP
14	Danielle Ferguson		0/0	0/0	0/0	0	0	0	0	0	0	0	0	0	DNP
15	Keshia McClain		0/0	0/1	0/0	0	0	1	1	0	0	0	0	0	4:28
20	* Amber Biddle		3/12	0/2	2/4	8	3	4	7	4	0	2	1	1	24:35
21	Adriana Neely		0/0	0/0	2/2	2	1	0	1	3	0	1	2	0	18:32
22	* Caitlin Martin		2/5	1/6	4/6	11	3	2	5	1	0	1	0	2	31:21
25	Taylor Lewis		0/0	0/0	0/0	0	0	0	0	1	0	0	0	0	0:15
33	* Natasha Kissinger		0/1	0/0	0/0	0	0	0	0	1	0	2	0	1	14:42
34	Katherine Duff		0/0	0/1	0/0	0	0	0	0	0	0	0	0	0	3:17
55	Hannah Brown		0/0	0/0	0/0	0	0	0	0	0	0	0	0	0	DNP
5	Jade Turner		0/0	0/0	0/0	0	0	0	0	0	0	0	0	0	DNP
	Team						1	1	2						
	Totals		6/26	1/16	11/18	26	11	15	26	18	1	12	3	5	160
	2 PT FG		1st Half	4/11	36.4%	2nd Half	2/15	13.3%	Game	6/26	23.1%				
	3 PT FG		1st Half	0/6	0.00%	2nd Half	1/10	10.0%	Game	1/16	6.25%				
	Free Throws		1st Half	6/10	60.0%	2nd Half	5/8	62.5%	Game	11/18	61.1%				

	BOONE			ROWAN			BOONE			ROWAN		
Free Throw Pts	7	11	3Pt Points	6	3	Pts/Possession	0.74	0.50				
Pts off Turnovers	10	9	2nd Chance Points	10	5	Pts off Bench	5	2				
Total Rebounds	42	26	Team Rebounds	8	2	Dead Ball Reb	4	5				
Off Rebound %	53.1	30.6	Def Rebound %	69.4	46.9	Total Rebound %	61.8	38.2				
3Pt Efficiency	+0.2	-9.1	Def. Stops	37	34	Pts/Shot	0.78	0.51				
Technical Fouls	BOONE			None								
	ROWAN			None								
Officials	Terry Baldwin, Kerry Henson, Jennifer Hilton											

	Qtr 1	Qtr 2	Qtr 3	Qtr 4	OT 1	OT 2	OT 3	OT 4	Total
Boone County Lady Rebels	13	9	6	11	0	0	0	0	39
Rowan County Lady Vikings	4	10	3	9	0	0	0	0	26

Largest Lead ROWAN 6 BOONE 19 (13 pts) **Lead Changes** 1 **Number of Ties** 1
Comments: None

FIRST HALF



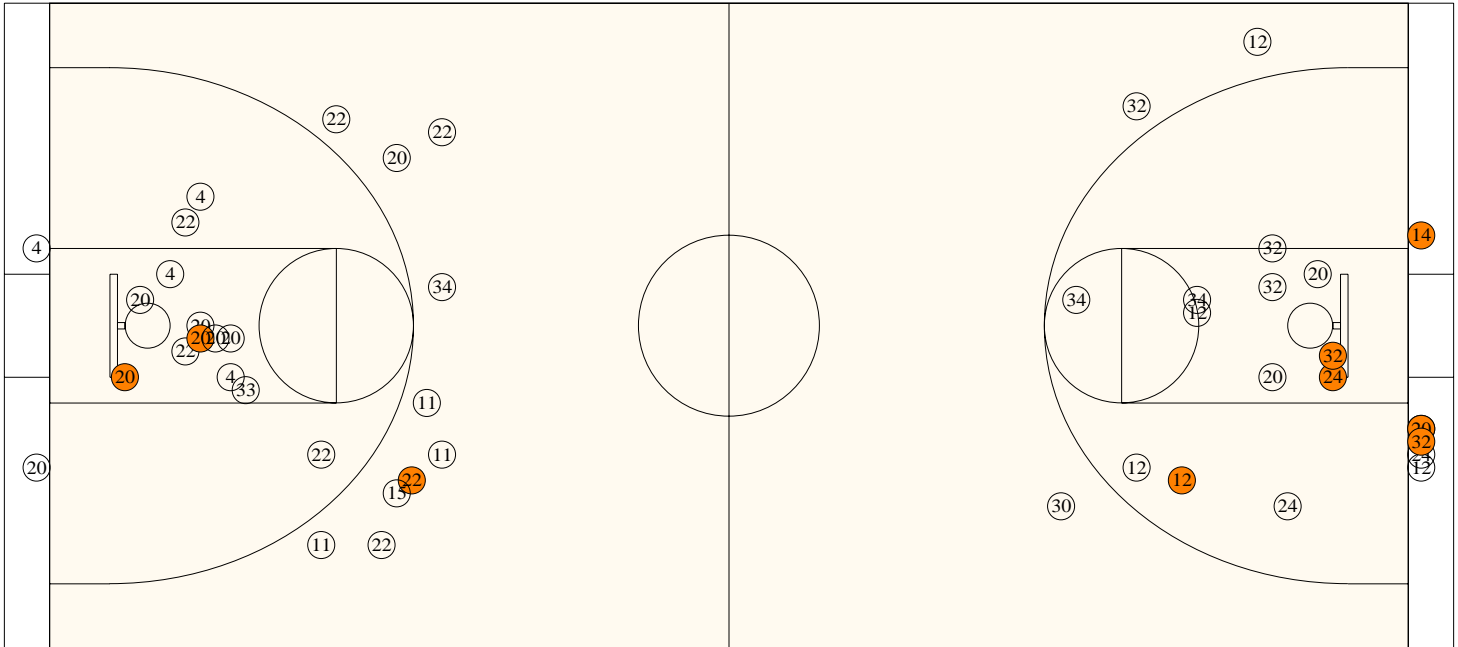
Rowan County

Shooting	Pts	Pts
2FG 4/11 (36.4%)	8	Pts/Shot 0.64
3FG 0/6 (0.00%)	0	2nd Eff Pts 2
TFG 4/17 (23.5%)		Pts off TO's 6
FT 6/10 (60.0%)	6	3Pt Eff -24.2
Scoring Distribution: 2FG 57.1% 3FG 0.0% FT 42.9%		

Boone County

Shooting	Pts	Pts
2FG 7/17 (41.2%)	14	Pts/Shot 0.88
3FG 2/5 (40.0%)	6	2nd Eff Pts 5
TFG 9/22 (40.9%)		Pts off TO's 4
FT 2/6 (33.3%)	2	3Pt Eff +12.5
Scoring Distribution: 2FG 63.6% 3FG 27.3% FT 9.1%		

SECOND HALF



Rowan County

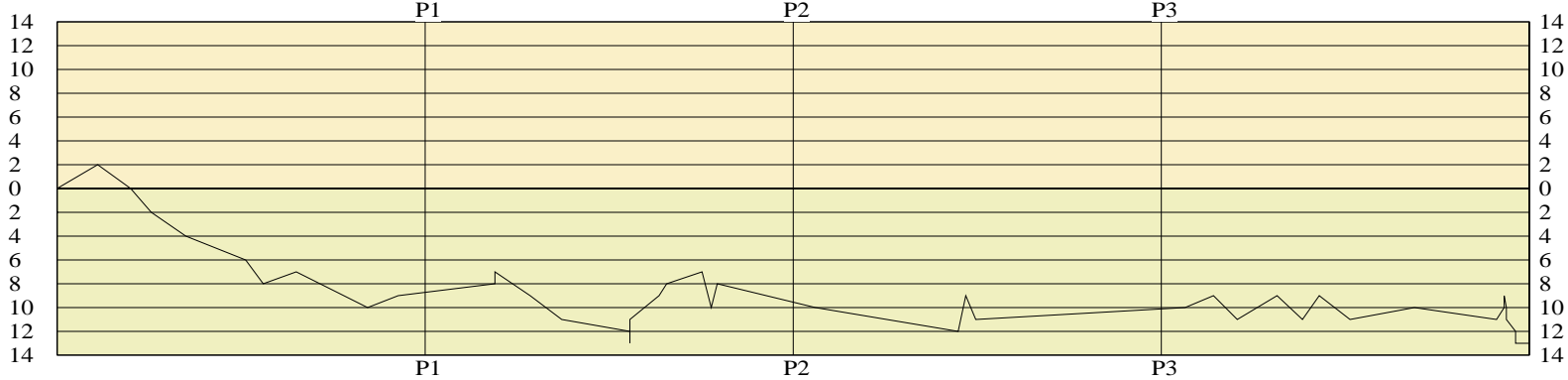
2FG 2/15 (13.3%)	4ts	Pts/Shot 0.41
3FG 1/10 (10.0%)	3	2nd Eff Pts 3
TFG 3/25 (12.0%)		Pts off TO's 3
FT 5/8 (62.5%)	5	3Pt Eff +1.1
Scoring Distribution: 2FG 33.3% 3FG 25.0% FT 41.7%		

Boone County

2FG 6/18 (33.3%)	12s	Pts/Shot 0.68
3FG 0/3 (0.00%)	0	2nd Eff Pts 5
TFG 6/21 (28.6%)		Pts off TO's 6
FT 5/8 (62.5%)	5	3Pt Eff -22.2
Scoring Distribution: 2FG 70.6% 3FG 0.0% FT 29.4%		

Lady Vikings

LEAD TIMELINE

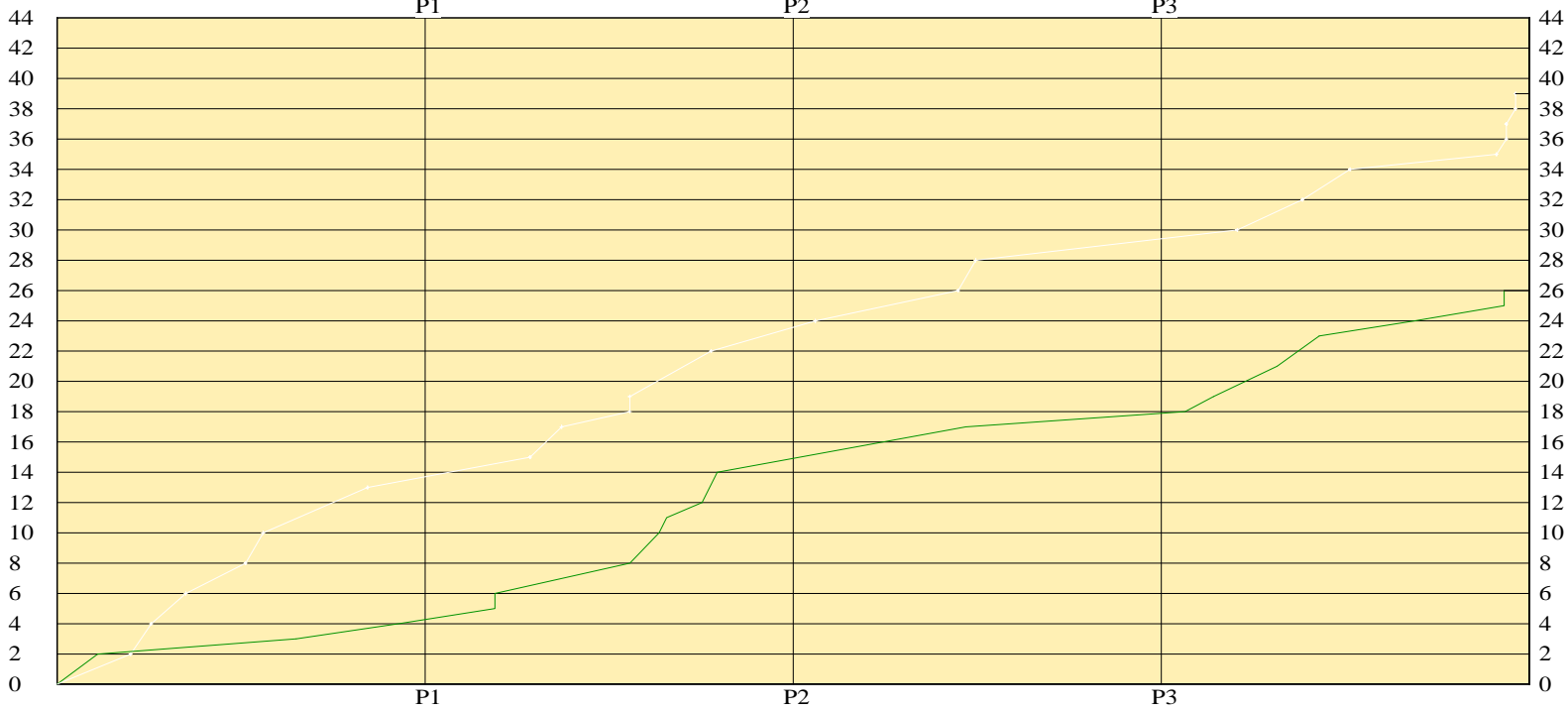


Lady Rebels

Lady Vikings

SCORING TIMELINE

Lady Rebels



Largest Lead ROWAN 6 BOONE 19 (13 pts) Lead Changes 1 Number of Ties 1

KHSAA Basketball - Play by Play Report - Scoring Only (pg 1)

Rowan County Lady Vikings vs. Boone County Lady Rebels

Date: 03/12/09 Time: 1:30 PM Site: Diddle Arena-Bowling Green, KY Attendance: 4523

Name	Action	Action	Score	Clock	Diff	Name	Action	Action
C Martin	Layup Made		2-0	1 7:07	+2 (L1)			
			2-2	1 6:24	(T1)	J Davis	Layup Made	H Sandlin Assist
			2-4	1 5:57	-2 (L2)	L Bowling	Layup Made	J Bradley Assist
			2-6	1 5:12	-4	L Bowling	Layup Made	H Sandlin Assist
			2-8	1 3:54	-6	J Davis	Putback Made	
			2-10	1 3:31	-8	J Davis	Layup Made	C Sellers Assist
C Martin	FT Made		3-10	1 2:48	-7			
			3-13	1 1:15	-10	L Bowling	3Pt Made	J Davis Assist
C Martin	FT Made		4-13	1 0:35	-9			

End of Period Summary Lady Vikings 4 Lady Rebels 13

Largest Lead: Lady Vikings 3 Lady Rebels 13 (10 pts)

Lead in Period: Lady Vikings 3 Lady Rebels 13 (10 pts)

5 for 4 oppo pts

1 for 0 pts

1/8 for 12.5 %

2/4 for 50.0 %

Turnovers

2nd Chances

Field Goals

Free Throws

Lead Changes: 2 Ties: 1

Lead Changes: 1 Ties: 1 (this period)

4 for 3 oppo pts

4 for 5 pts

6/13 for 46.2 %

0/2 for 0.00 %

A Neely	FT Made		5-13	2 6:29	-8			
A Neely	FT Made		6-13	2 6:29	-7			
			6-15	2 5:43	-9	L Bowling	Layup Made	
			6-17	2 5:02	-11	H Sandlin	FG Made	
N Kissinger	Personal Foul		6-18	2 3:33	-12	L Bowling	FT Made	
			6-19	2 3:33	-13	L Bowling	FT Made	
C Martin	FG Made		8-19	2 3:33	-11			
A Biddle	FG Made		10-19	2 2:55	-9			
J Brockman	FT Made		11-19	2 2:45	-8			
A Biddle	FT Made		12-19	2 1:59	-7			
			12-22	2 1:47	-10	A Browning	3Pt Made	H Sandlin Assist
J Brockman	Layup Made		14-22	2 1:39	-8			

End of Period Summary Lady Vikings 14 Lady Rebels 22

Largest Lead: Lady Vikings 6 Lady Rebels 19 (13 pts)

Lead in Period: Lady Vikings 6 Lady Rebels 19 (13 pts)

2 for 0 oppo pts

2 for 2 pts

3/9 for 33.3 %

4/6 for 66.7 %

Turnovers

2nd Chances

Field Goals

Free Throws

Lead Changes: 2 Ties: 1

Lead Changes: 0 Ties: 0 (this period)

6 for 3 oppo pts

4 for 0 pts

3/9 for 33.3 %

2/4 for 50.0 %

			14-24	3 7:31	-10	C Sellers	Putback Made	
			14-26	3 4:25	-12	L Bowling	Putback Made	
C Martin	3Pt Made	J Brockman Assist	17-26	3 4:15	-9			
			17-28	3 4:02	-11	J Marschall	Layup Made	J Bradley Assist

End of Period Summary Lady Vikings 17 Lady Rebels 28

Largest Lead: Lady Vikings 6 Lady Rebels 19 (13 pts)

Lead in Period: Lady Vikings 14 Lady Rebels 26 (12 pts)

3 for 2 oppo pts

2 for 0 pts

1/11 for 9.09 %

0/0 for 0.00 %

Turnovers

2nd Chances

Field Goals

Free Throws

Lead Changes: 2 Ties: 1

Lead Changes: 0 Ties: 0 (this period)

4 for 0 oppo pts

7 for 4 pts

3/16 for 18.8 %

0/0 for 0.00 %

KHSAA Basketball - Play by Play Report - Scoring Only (pg 2)

Rowan County Lady Vikings vs. Boone County Lady Rebels

Date: 03/12/09 Time: 1:30 PM Site: Diddle Arena-Bowling Green, KY Attendance: 4523

Name	Action	Action	Score	Clock	Diff	Name	Action	Action
K Muncy	FT Made		18-28	4	7:29	-10		
J Brockman	FT Made		19-28	4	6:52	-9		
			19-30	4	6:21	-11	J Davis	Layup Made
A Biddle	FG Made		21-30	4	5:29	-9		C Sellers Assist
			21-32	4	4:56	-11	L Bowling	Layup Made
A Biddle	Putback Made		23-32	4	4:34	-9		J Bradley Assist
			23-34	4	3:54	-11	J Bradley	FG Made
A Biddle	FT Made		24-34	4	2:30	-10		
			24-35	4	0:43	-11	J Bradley	FT Made
C Martin	FT Made		25-35	4	0:33	-10		
C Martin	FT Made		26-35	4	0:33	-9		
A Biddle	Personal Foul		26-36	4	0:30	-10	L Bowling	FT Made
			26-37	4	0:30	-11	L Bowling	FT Made
J Kiser	Personal Foul		26-38	4	0:18	-12	J Davis	FT Made
			26-39	4	0:18	-13	J Davis	FT Made

End of Period Summary Lady Vikings 26 Lady Rebels 39

Largest Lead: Lady Vikings 6 Lady Rebels 19 (13 pts)

Lead in Period: Lady Vikings 26 Lady Rebels 39 (13 pts)

2 for 4 oppo pts

6 for 3 pts

2/14 for 14.3 %

5/8 for 62.5 %

Turnovers

2nd Chances

Field Goals

Free Throws

Lead Changes: 2 Ties: 1

Lead Changes: 0 Ties: 0 (this period)

5 for 3 oppo pts

2 for 1 pts

3/5 for 60.0 %

5/8 for 62.5 %

OFFICIAL BASKETBALL BOX SCORE
Boone County Lady Rebels vs Rowan County Lady Vikings

03/12/09 1:30 PM
Final Box Score

Diddle Arena
Bowling Green, KY

No.	Boone County Lady Rebels	Total FG		3-point		Free throw		Rebounds			F	TP	A	TO	BLK	STL	MIN
		FG	FGA	FG	FGA	FT	FTA	Off	Def	Tot							
10	Ashley Smith	0	0	0	0	0	0	0	0	0	0	0	0	0	0	0	DNP
11	Kayla Robertson	0	0	0	0	0	0	0	0	0	0	0	0	0	0	0	DNP
12	Jacy Bradley	1	6	0	1	1	3	0	3	3	3	3	3	5	0	1	26:24
14	Jackie Marschall	1	1	0	0	0	0	0	1	1	0	2	0	0	0	0	4:21
15	Olivia Fields	0	0	0	0	0	0	0	0	0	0	0	0	0	0	0	DNP
32	Lauren Bowling	6	9	1	2	4	9	3	7	10	2	17	0	2	0	2	30:02
20	Joscelyn Davis	4	12	0	0	2	2	6	6	12	2	10	1	0	2	0	27:39
34	Heather Sandlin	1	6	0	1	0	0	0	0	0	3	2	3	6	0	2	27:26
24	Courtney Sellers	1	5	0	1	0	0	2	5	7	2	2	2	2	0	0	25:02
30	Annie Browning	1	3	1	2	0	0	0	0	0	1	3	0	0	1	1	10:42
25	Stacie Shroust	0	1	0	1	0	0	0	1	1	2	0	0	3	0	0	8:24
23	Meagan Spicer	0	0	0	0	0	0	0	0	0	0	0	0	0	0	0	DNP
42	Lydia Nash	0	0	0	0	0	0	0	0	0	0	0	0	0	0	0	DNP
13	Ashleigh Conner	0	0	0	0	0	0	0	0	0	0	0	0	0	0	0	DNP
Team (Included in Totals)								6									
Totals		15	43	2	8	7	14	17	25	42	15	39	9	19	3	6	160
Total FG%: 1st half 9 - 22 (40.9%)		2nd half 6 - 21 (28.6%)		Game 15 - 43 (34.9%)		Deadball											
3Pt FG%: 1st half 2 - 5 (40.0%)		2nd half 0 - 3 (0.00%)		Game 2 - 8 (25.0%)		rebounds											
FT%: 1st half 2 - 6 (33.3%)		2nd half 5 - 8 (62.5%)		Game 7 - 14 (50.0%)		4											
No.	Rowan County Lady Vikings	Total FG		3-point		Free throw		Rebounds			F	TP	A	TO	BLK	STL	MIN
		FG	FGA	FG	FGA	FT	FTA	Off	Def	Tot							
3	Tierra Hamilton	0	0	0	0	0	0	0	0	0	0	0	0	1	0	0	4:10
4	Kaitlyn Muncy	0	6	0	0	1	2	1	1	2	1	1	0	1	0	0	16:59
10	Jenna Kiser	0	2	0	2	0	0	1	3	4	2	0	0	1	0	0	10:39
11	Jennifer Brockman	1	6	0	4	2	4	1	3	4	5	4	1	3	0	1	31:02
12	Stevee Townsend	0	0	0	0	0	0	0	0	0	0	0	0	0	0	0	DNP
22	Caitlin Martin	3	11	1	6	4	6	3	2	5	1	11	0	1	0	2	31:21
20	Amber Biddle	3	14	0	2	2	4	3	4	7	4	8	0	2	1	1	24:35
21	Adriana Neely	0	0	0	0	2	2	1	0	1	3	2	0	1	2	0	18:32
33	Natasha Kissinger	0	1	0	0	0	0	0	0	0	1	0	0	2	0	1	14:42
15	Keshia McClain	0	1	0	1	0	0	0	1	1	0	0	0	0	0	0	4:28
34	Katherine Duff	0	1	0	1	0	0	0	0	0	0	0	0	0	0	0	3:17
25	Taylor Lewis	0	0	0	0	0	0	0	0	0	1	0	0	0	0	0	0:15
14	Danielle Ferguson	0	0	0	0	0	0	0	0	0	0	0	0	0	0	0	DNP
55	Hannah Brown	0	0	0	0	0	0	0	0	0	0	0	0	0	0	0	DNP
5	Jade Turner	0	0	0	0	0	0	0	0	0	0	0	0	0	0	0	DNP
Team (Included in Totals)								1									
Totals		7	42	1	16	11	18	11	15	26	18	26	1	12	3	5	160
Total FG%: 1st half 4 - 17 (23.5%)		2nd half 3 - 25 (12.0%)		Game 7 - 42 (16.7%)		Deadball											
3Pt FG%: 1st half 0 - 6 (0.00%)		2nd half 1 - 10 (10.0%)		Game 1 - 16 (6.25%)		rebounds											
FT%: 1st half 6 - 10 (60.0%)		2nd half 5 - 8 (62.5%)		Game 11 - 18 (61.1%)		5											

Technical Fouls: None

Attendance: 4523

Officials: Terry Baldwin, Kerry Henson, Jennifer Hilton

Score by Period	1st	2nd	3rd	4th	Final	Record	Overall	Conf
Boone County Lady Rebels	13	9	6	11	39	Lady Rebels		
Rowan County Lady Vikings	4	10	3	9	26	Lady Vikings		

Points off Turnovers	9	10	Second Effort Points	5	10	Bench Points	2	5
Points in the Paint	8	24	3 Point Points	3	6	Free Throw Points	11	7
3pt Efficiency	-9.1	+0.2	Points/Shot	0.51	0.78	Defensive Stops	34	37
Largest Lead	6	19	(13 pts) Lead Changes	1		Number of Ties	1	

Game comments: None